

## PRODUCT DESCRIPTION

### MAIN FEATURES

UpCase 45 combines robust aluminum construction with modern design and intelligent functionality. It brings together flexibility, protection, and usability in one sleek housing solution — creating the ideal foundation for integrating your electronics seamlessly and securely.

Designed for both desktop and wall-mounted applications, UpCase 45 adapts effortlessly to your project's needs. Available in black and white and optionally with a display and display frame, it offers both technical strength and aesthetic refinement — making it the perfect choice for modern electronic systems. Its removable back and bottom plates simplify installation and maintenance, while the customizable front panel allows for individual printing and branding options.

### POSSIBLE CUSTOMIZATIONS

- Individual color combination
- Customer-specific display front and rear panel
- Table or wall-mounted housing
- Display frame and display
- Mounting options of electronics
- Front panel is made of aluminum and can be printed on

## VARIETY

### SIZE

- One standard size
- Other sizes available on request

- › Material: Aluminum
- › Removable back plate
- › Bottom plate with removable mounting plate
- › Front panel with various printing options
- › Usable as a table-top or wall-mounted housing
- › High EMC protection
- › Designed to meet IP54 requirements (certification pending)
- › Standard colors: black & white
- › Optional display and display frame

### TYPICAL APPLICATIONS

- Test and measurement technology
- Sensor technology
- Medical equipment
- Testing and calibrating devices
- Optical and mechanical measuring systems

### COLOR

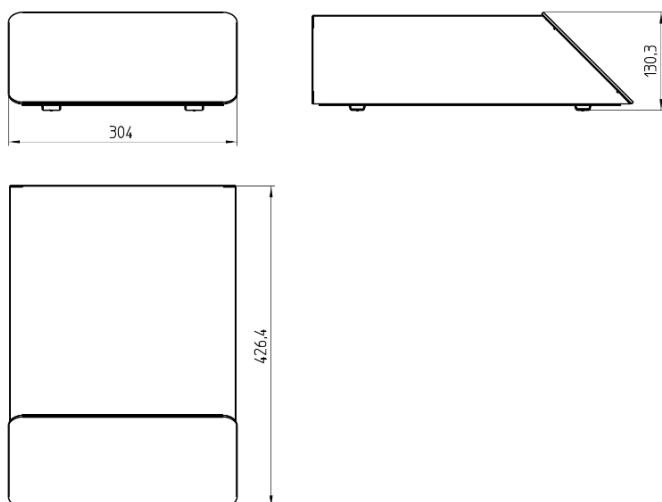
- Two standard colors white and black
- Other colors available on request

## TYPES

### WITH STANDARD FEET

Part number white: NX45-101-9101-70

Part number black: NX45-101-9101-60



### SPECIFICATIONS

**Dimensions:**

L 427 mm x W 304 mm x H 131 mm

**Color:**

White (RAL 9010) or black (RAL 9005)

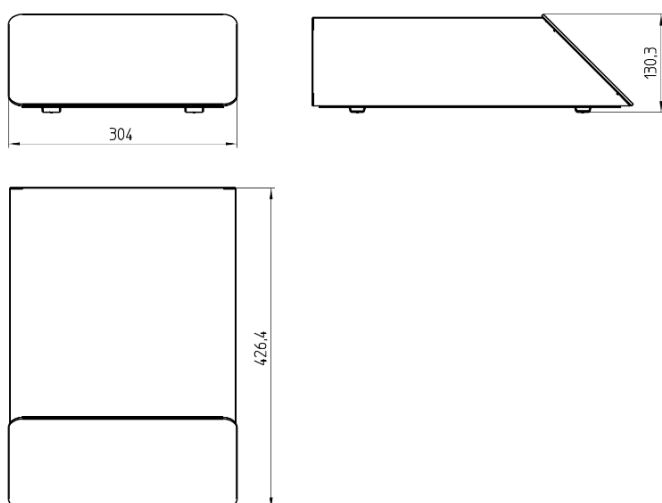
**Scope of delivery:**

- 1 aluminium enclosure, powder coated
- 1 front panel, colorless anodised
- 1 bottom plate, colorless anodised
- 4 feet
- 1 mounting plate, colorless anodised

### IP VERSION

Part number white: NX45-101-9151-70

Part number black: NX45-101-9151-60



### SPECIFICATIONS

**Dimensions:**

L 427 mm x W 304 mm x H 131 mm

**Color:**

White (RAL 9010) or black (RAL 9005))

**Scope of delivery:**

- 1 aluminium enclosure, powder coated
- 1 front panel, colorless anodised
- 1 bottom plate, colorless anodised
- 4 feet
- 1 mounting plate, colorless anodised
- Set of Gaskets

## REAR PANEL

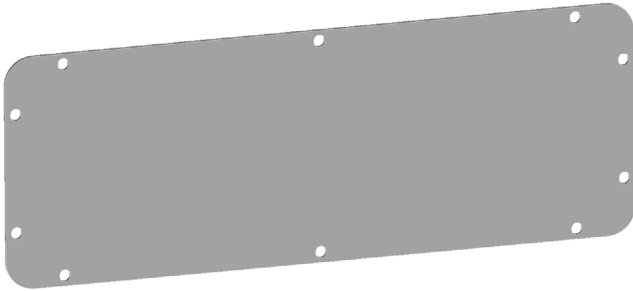
---

### STANDARD

---

Part number white: NX45-201-9107-70

Part number black: NX45-201-9107-60



Scope of delivery:

- 1 aluminium rear panel, powder coated
- Screws

Color:

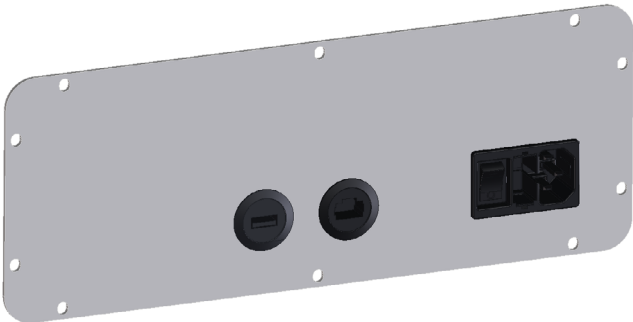
White (RAL 9010) or black (RAL 9005)

### PRECONFIGURED

---

Part number white: NX45-201-9108-70

Part number black: NX45-201-9108-60



Scope of delivery:

- 1 aluminium rear panel, powder coated
- 1 EC device plug
- 1 USB service interface
- 1 RJ45 service interface
- Screws

Color:

White (RAL 9010) or black (RAL 9005)

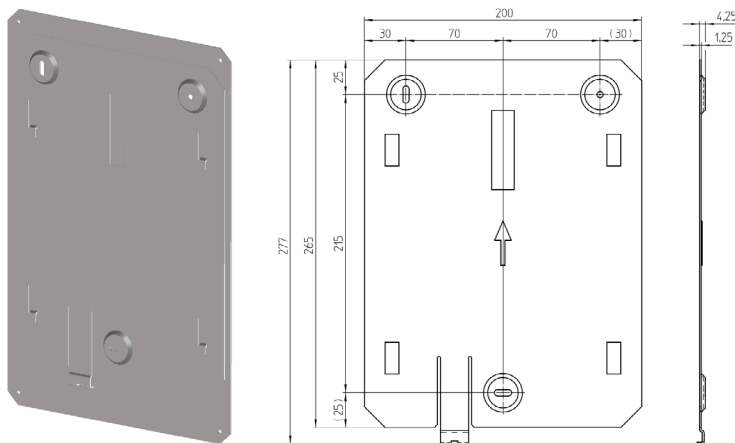
Existing connections in the rear panel:

- 1 EC device plug C14: 1-pole fuse holder; 2-pole mains switch, incl. filter: Inductance L [mH] 2 x 4; Capacitance CX [nF] 47; Capacitance CY [nF] 2.2; R[MΩ] incl. fuse: 3.15 A T
- 1 USB service interface
- 1 RJ45 service interface

## OPTIONS

### WALL MOUNTING

Part number: NX45-210-0001



### SPECIFICATIONS

Dimensions:

- Adapter plate
- Wall bracket L 277 mm x W 200 mm x H 4.25 mm

Color:

Colorless anodised

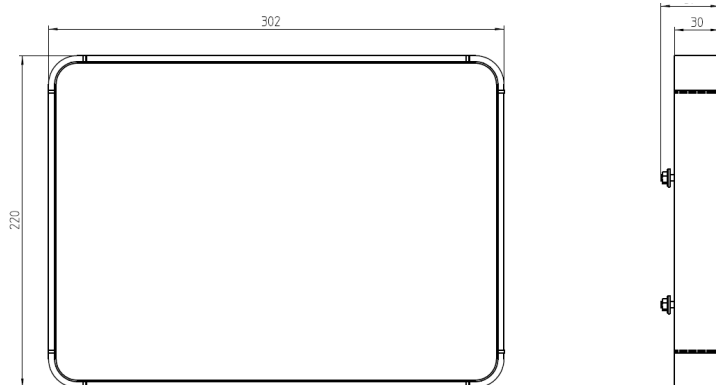
Scope of delivery:

- 1 aluminium enclosure, powder coated
- 1 wall bracket

### DISPLAY FRAME

Part number white: NX45-290-9301-70

Part number black: NX45-290-9301-60



### SPECIFICATIONS

Dimensions:

L 302 mm x W 220 mm x H 30 mm

Color:

White (RAL 9010) or black (RAL 9005)

Scope of delivery:

- 1 aluminium frame, powder coated
- 1 rear panel
- 1 cover plate

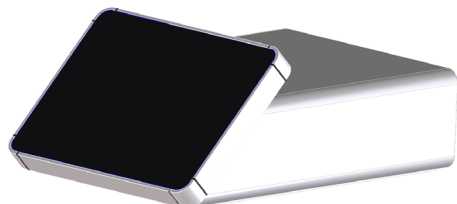


Illustration of UpCase 45 with display frame

©Copyright 2025 by Elma Electronic AG, CH-8620 Wetzikon. Subject to technical modifications, all data supplied without liability.

**Please contact our sales team for more details.**

China: +86 21 5866 5908  
 France: +33 388 56 72 50

Germany: +49 7231 97 34 0  
 Israel: +972 3 930 50 25

Singapore: +65 6479 8552  
 Switzerland: +41 44 933 41 11

United Kingdom: +44 1234 838 822  
 United States: +1 510 656 3400