

DESCRIPTION

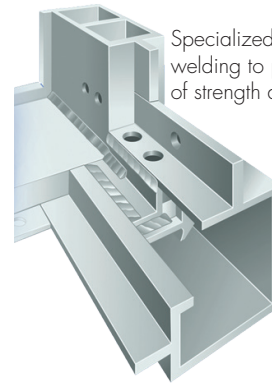
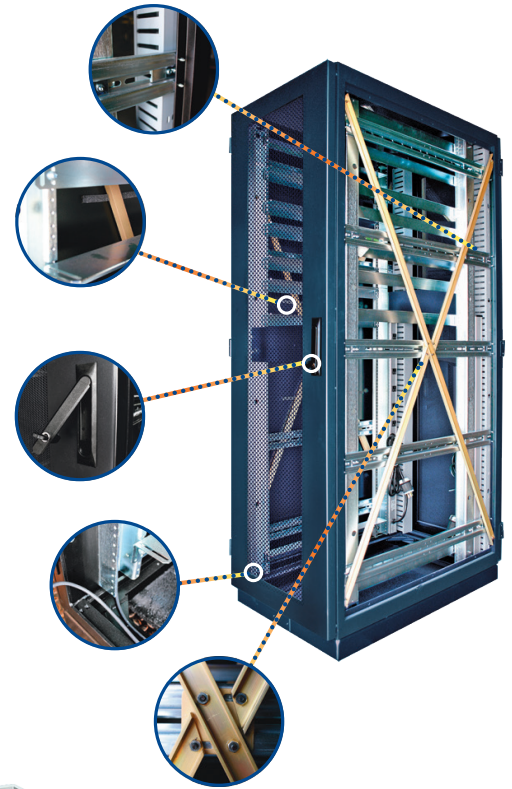
All M-Series Optima Stantron cabinets are designed and tested to withstand the shock and vibration of several mobile, seismic and mil-aero applications. This includes meeting earthquake Seismic Zone 4 event as defined in GR-63-CORE, without displaying any permanent deformation which impairs performance or operation. The M1 (single wall extrusion) meets NEBS Level 3 requirements and its modular construction makes it ideal for customizing to specific needs. For server applications requiring seismic performance in excess of industry standards the M2's double cavity, aluminum extrusion provides a substantial increase in seismic performance. Each application requires engineering review for equipment loads and rack position. Doors, side panels, top covers and bottom are available and designed to remain in place during a seismic event.

FEATURES

- Heavy duty single or double walled extrusions
- Internal reinforcing corner keys, four way crimped and welded
- Corner sockets & corner members welded to meet: ANSI 329, BellcoreTR-63
- 7 gauge welded steel base with 11 gauge rails (10 gauge rails optional)
- Universal hard mounting to floor – bolt down base (ceiling or wall bracing optional)
- Vibration resistant hardware
- Standard Sizes:
 - Widths: 19", 23" and 24"
 - Heights: 12U, 16U, 20U, 24U, 30U, 35U, 40U, 44U (custom available)
 - Depths: 24", 30", 36", 42"
- Independent, removable side, top panel, bottom panel and doors
- Integrated cable management, power conditioning & cooling options

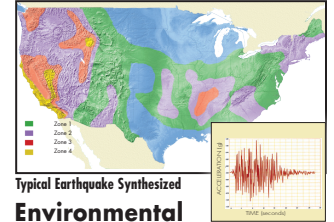
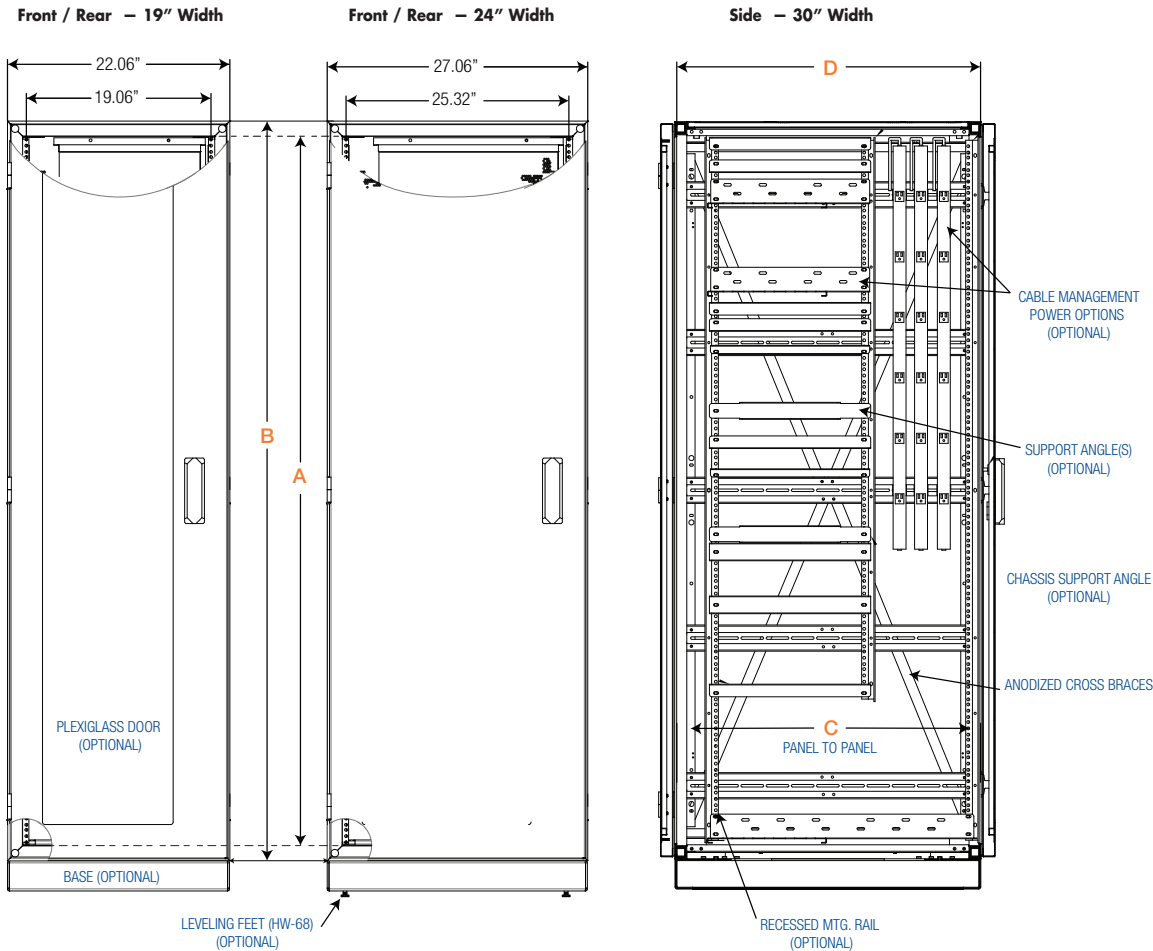
BENEFITS

- Meets seismic zone 4 per GR-63-CORE
- Customized engineering review based on customer specific load requirements
- EMC and NEMA rated versions (optional)
- Modular design reduces installation, upgrade and service time
- Wide range of industry standard sizes, cabling, cooling and power options
- Selection of contemporary color choices (custom color matching also available)
- Proven paint adhesion provides durable aesthetics



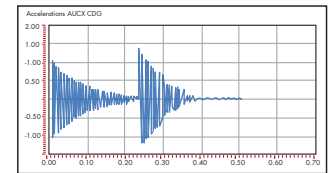
Specialized extrusion with additional welding to provide the widest range of strength and stability.

DRAWING



Environmental Considerations for Seismic-Hardening

Earthquake-prone areas such as regions of California (along the San Andreas and other faults) are specified as Zone 4. Zone 3 regions are the next most active. Zones 2 and 1 represent the lowest risk regions.



MIL-STD 901-D Shock Graph

Optima's M-Series cabinet enclosure passing MIL-STD-810F and MIL-STD-901D tests for shock and vibration. Optima's M series MIL-SPEC Cabinet System has a unique modular construction designed to exceed military standards and can adapt to the equipment-mounting and protection needs of virtually any electronic system. The enclosure employs thicker gauge aluminum, reinforced corner members, cross-bracing, spot welding, and a reinforced base to withstand Seismic Zone 4 and MIL/rugged applications.

U	A		B		C	D
	inch	mm	inch	mm		
12	21.12	536.45	24.12	612.65	24.00"	24.40"
16	28.12	714.25	31.12	790.45	(609.60mm)	(619.76mm)
20	35.12	892.05	38.12	968.25		
24	42.12	1069.85	45.12	1146.05	30.00"	30.40"
30	52.62	1336.55	55.62	1412.75	(762.00mm)	(722.16mm)
35	61.38	1559.05	64.38	1635.25		
40	70.12	1781.05	73.12	1857.25	36.00"	36.40"
44	77.12	1958.85	80.12	2035.05	(914.40mm)	(924.56mm)

SCOPE OF SUPPLY

Basic cabinet includes: 1 x frame, 2 x mounting rails (pairs, with 10A clip nuts and panel screws), 1 x base, 1 x top panel, painted and assembled

ORDER INFORMATION

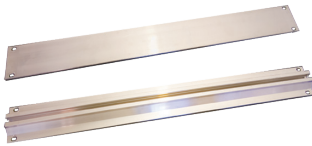
Optima Stantron's M-Series cabinet is compliant with the following specifications:

- Seismic Zone 4
- EMC
- NEMA
- MIL-STD-901D
- MIL-STD-461
- MIL-STD-810F
- MIL-STD-167
- MIL-STD-188

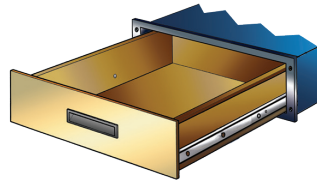
Please contact us at sales@elma.com or 770-496-4000 for more details

RELATED PRODUCTS

ACCESS9R8ES



Stiffners (front to back)



Shielded Drawers



Fan Packs

Optima Stantron's M-Series cabinets can be used in a wide range of applications.

- Mobile
- Computer / Server
- Test / Measurement
- Scientific
- MIL/Aero

© Copyright 2019 by Elma Electronic, Inc. Subject to technical modifications, all data supplied without liability.

Please contact our sales team for more details.

China: +86 21 5866 5908
France: +33 388 56 72 50

Germany: +49 7231 97 34 0
Israel: +972 3 930 50 25

Singapore: +65 6479 8552
Switzerland: +41 44 933 41 11

United Kingdom: +44 1234 838 822
United States: +1 510 656 3400